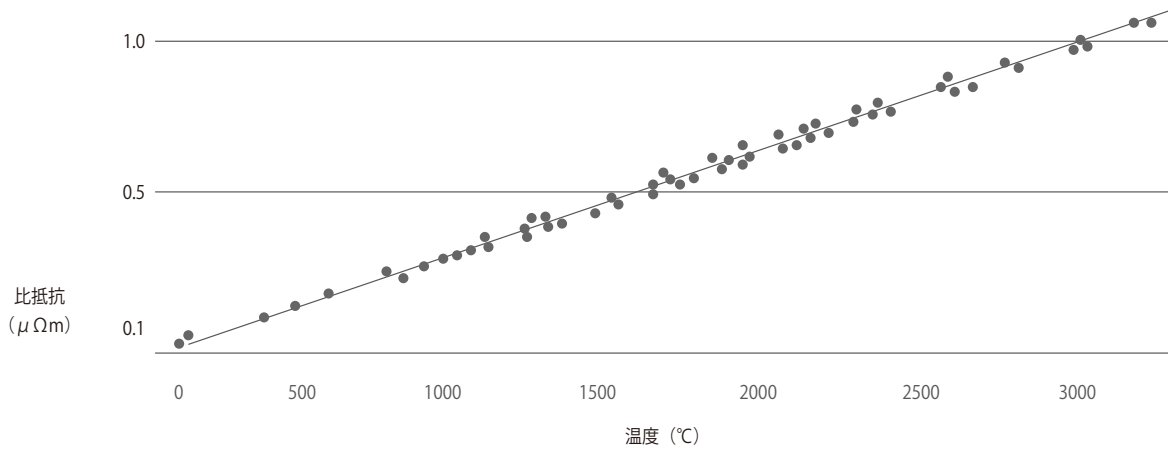


W・Mo・Taの電気比抵抗と温度

HEATER & REFLECTOR

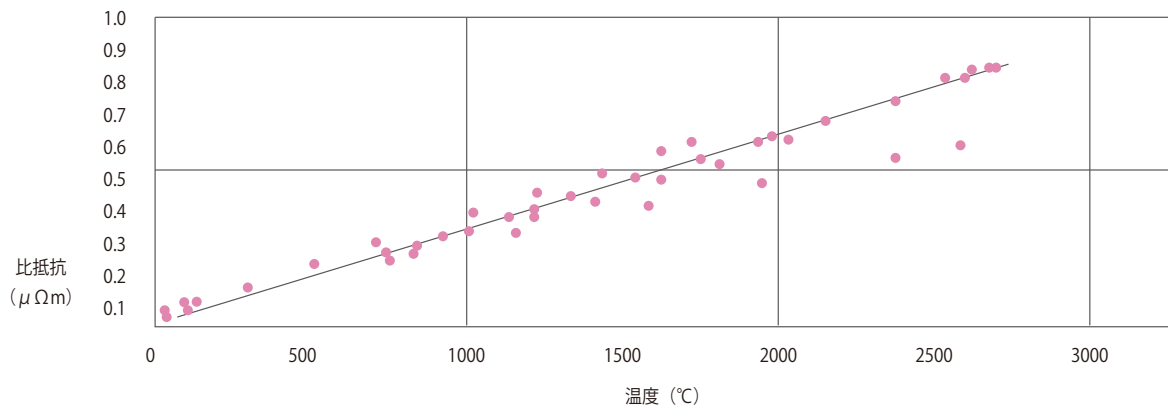
W タングステンの電気比抵抗の温度依存性

TEMPERATURE DEPENDENCY OF THE SPECIFIC ELECTRIC RESISTANCE OF TUNGSTEN



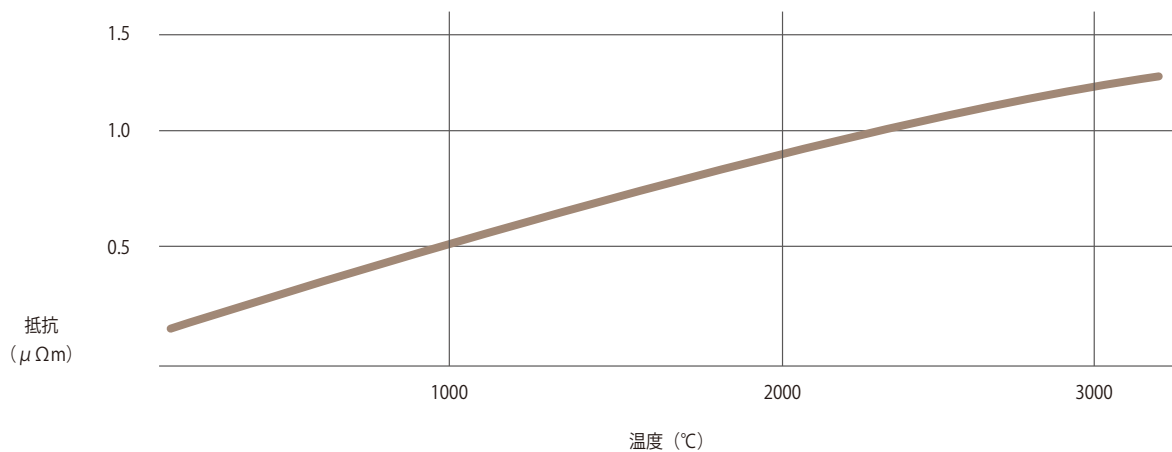
Mo モリブデンの電気比抵抗の温度依存性

TEMPERATURE DEPENDENCY OF THE SPECIFIC ELECTRIC RESISTANCE OF MOLYBDENUM



Ta タンタルの固有抵抗

RESISTIVITY OF TANTALUM

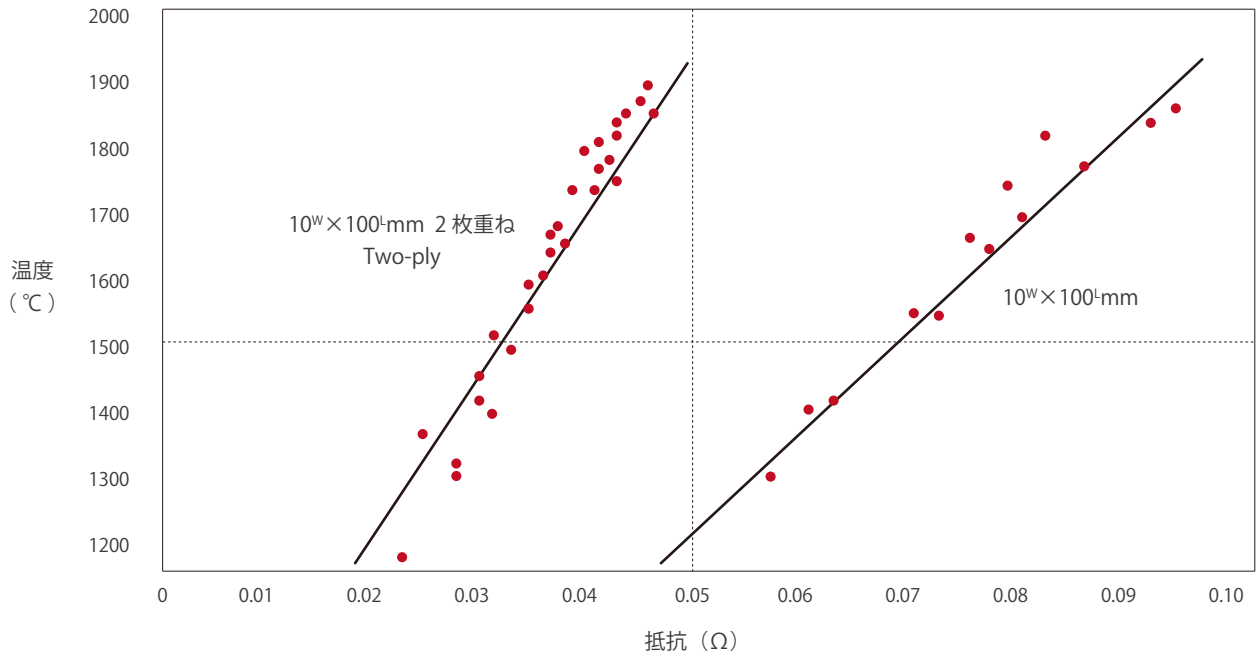


TEM の電気抵抗と高温強度

HEATER & REFLECTOR

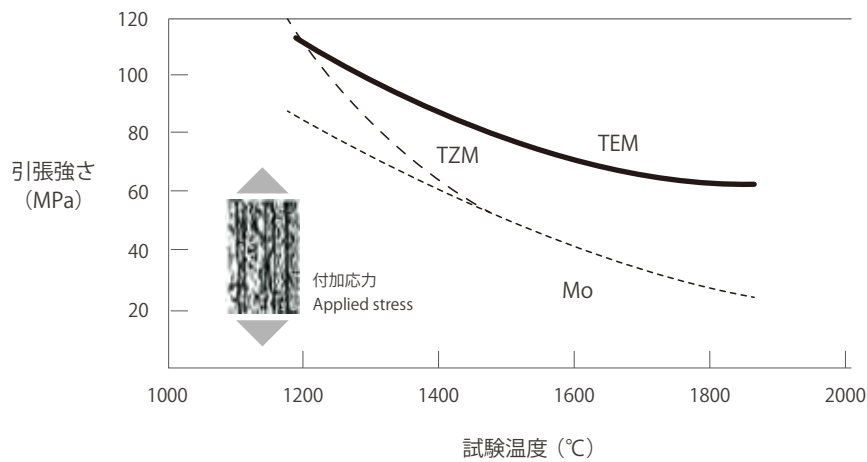
TEM メッシュの電気抵抗 (D 0.35mm×#24)

ELECTRIC RESISTANCE OF TEM MESH



TEM 板の高温強度

HIGH-TEMPERATURE STRENGTH OF TEM SHEET



試験条件

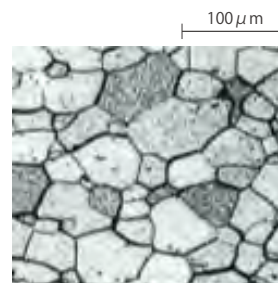
- (1) 試験雰囲気 / 真空 (1×10^{-5} torr 以下)
- (2) 試験片 / 平行部 T1 × B5 × L40mm (圧延方向が長手方向) 再結晶処理 1800°C
- (3) 引張速度 / 0.2mm / min

Test Condition

- (1) Test atmosphere / Vacuum (1×10^{-5} torr max.)
- (2) Test sample / Parallel section T1 × B5 × L40mm (The rolling direction is the longitudinal direction) Recrystallization 1800°C
- (3) Tensioning speed / 0.2 mm/min



TEM の再結晶組織
Recrystallized structure of TEM



Mo の再結晶組織
Recrystallized structure of Mo